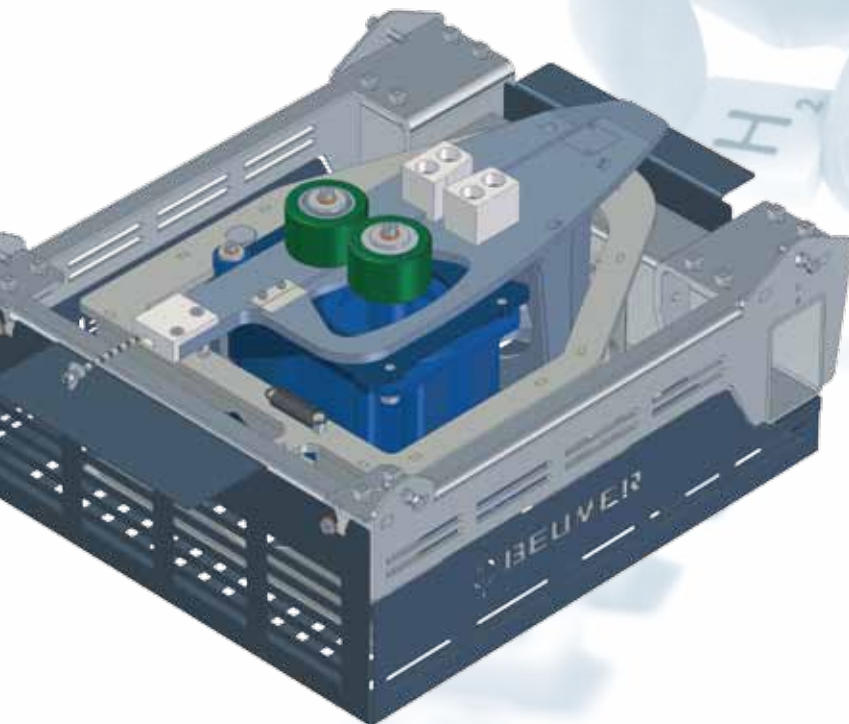




## BEUMER OptiDrive Technical data

### Benefits at a glance:

- Direct drive with optimised efficiency
- Low energy consumption
- Low investment costs
- Low operational costs
- Low maintenance costs
- Minimal wear and tear
- Low noise emission
- Low overall height
- Robust technology
- Sustainable



The BEUMER OptiDrive is a highly efficient force-locked drive technology, that operates on the principle of a friction drive. This modern, remote drive technology boasts approx. 80% less energy consumption than conventional sorter drives.

The contact pressure on the friction wheel is set automatically to match the power required at that moment by the sorter. The friction wheel is therefore always working at ideal operating point, resulting in increased efficiency for partial loads and minimised wear and tear.

The proportional pressure acting in two directions also makes it possible for the friction drive system to move and brake with the same force.

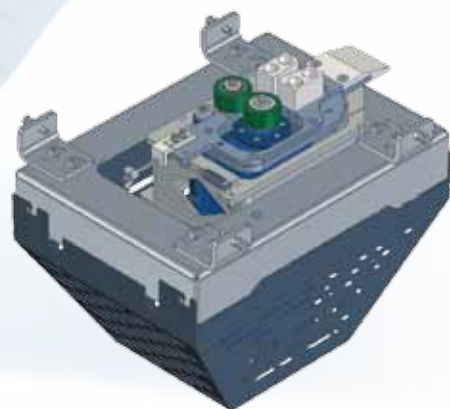
By the way: the BEUMER OptiDrive technology can also be retrofit to existing BEUMER sortation systems.



## BEUMER OptiDrive Technical data

### Drive systems for BEUMER Sorter BS 7/BS 25/BS 55

Drive system	BEUMER OptiDrive BS 7	BEUMER OptiDrive BS 25/BS 55
Technology	Friction wheel drive with double-acting proportional contact pressure, asynchronous direct drive	Friction wheel drive with double-acting proportional contact pressure, servo direct drive (gearless)
Permanent nominal feed force per drive	300 N	600 N
Max. sorter speed	2,5 m/s	3,0 m/s
Secondary part	<ul style="list-style-type: none"> <li>Aluminium blades with special contour which minimizes gaps</li> <li>No additional parts (e.g. magnets, steel)</li> </ul>	
Efficiency	65–75 %	75–85 %
Overall height (below sorter frame)	362 mm	230 mm
Benefits	<ul style="list-style-type: none"> <li>High energy efficiency</li> <li>Low number of drives</li> <li>Low investment costs</li> <li>Low operational costs</li> <li>Innovative technology (patent pending)</li> <li>Self-regulating contact pressure</li> <li>Automatic alignment adjustment</li> <li>Low noise</li> </ul>	



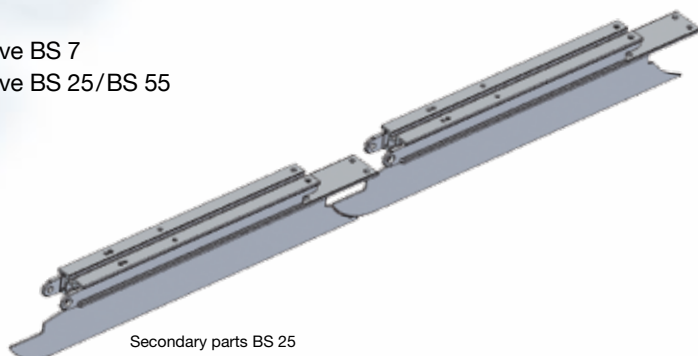
BEUMER OptiDrive BS 7



BEUMER OptiDrive BS 25/BS 55

The BEUMER OptiDrive is available in two constructional sizes, allowing for easy integration into any BEUMER loop sorter:

- BEUMER OptiDrive BS 7
- BEUMER OptiDrive BS 25/BS 55



Secondary parts BS 25

**BEUMER Group GmbH & Co. KG**  
PO Box 1254 · 59267 Beckum · Germany  
Tel. +49 (0) 25 21 24 - 0  
Fax +49 (0) 25 21 24 - 280  
E-mail: [BEUMER@BEUMER.com](mailto:BEUMER@BEUMER.com)

Further information is available at  
**[www.beumer.com](http://www.beumer.com)**